

Enclosure A

MULTI-CASUALTY

BRANCH MODULAR DEVELOPMENT

MEDICAL BRANCH

DEFINITION

The Medical Branch structure is designed to provide the Incident Commander with a basic, expandable system to manage a large number of patients during an incident. If incident conditions warrant, Medical Groups may be established under the Medical Branch Director. The degree of implementation will depend upon the complexity of the incident.

MODULAR DEVELOPMENT

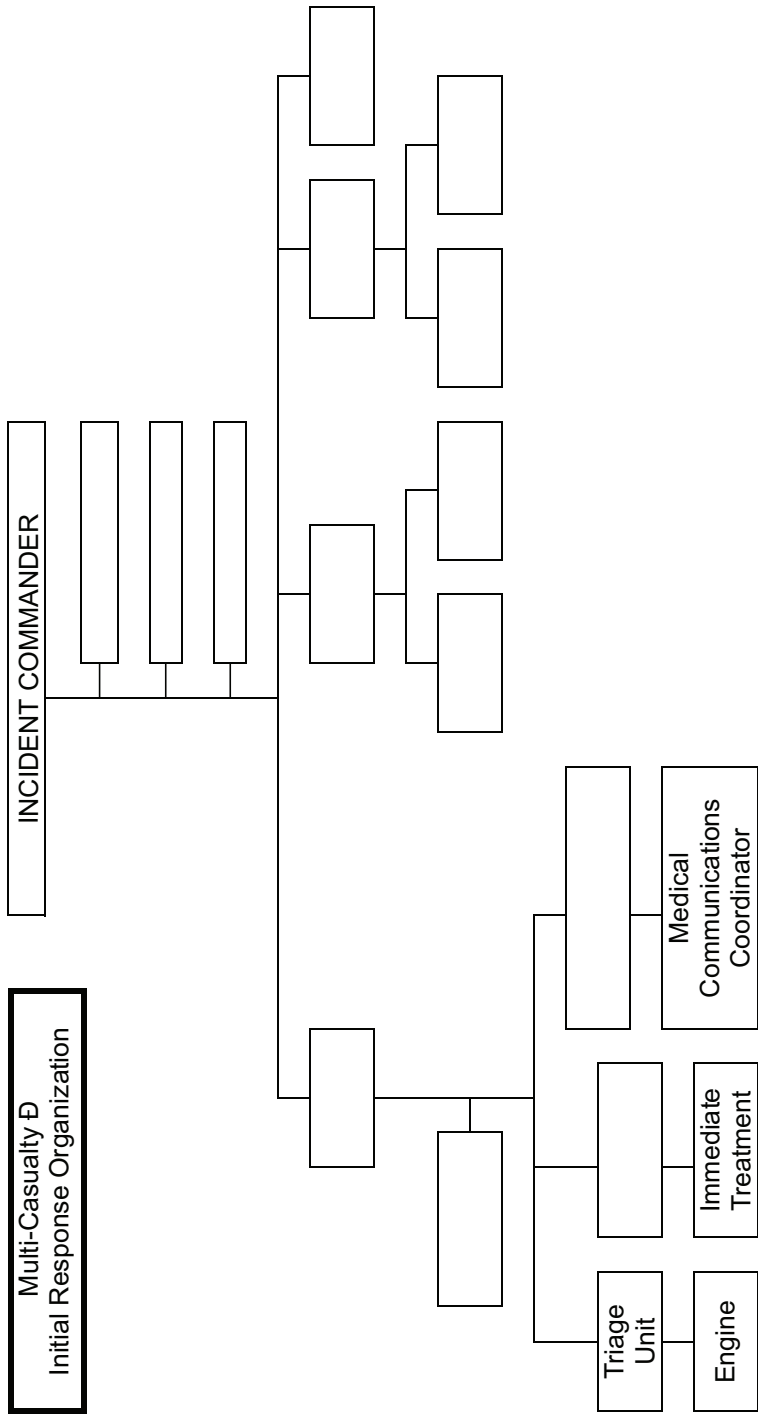
A series of examples for the modular development of the Medical Branch within an incident involving mass casualties are included to illustrate one possible method of expanding the incident organization:

Initial Response Organization: The Incident Commander manages initial response resources as well as all Command and General Staff responsibilities. The first arriving resource with the appropriate communications capability should establish communications with the appropriate hospital or other coordinating facility and become the Medical Communications Coordinator. Other first arriving resources would become Triage Personnel.

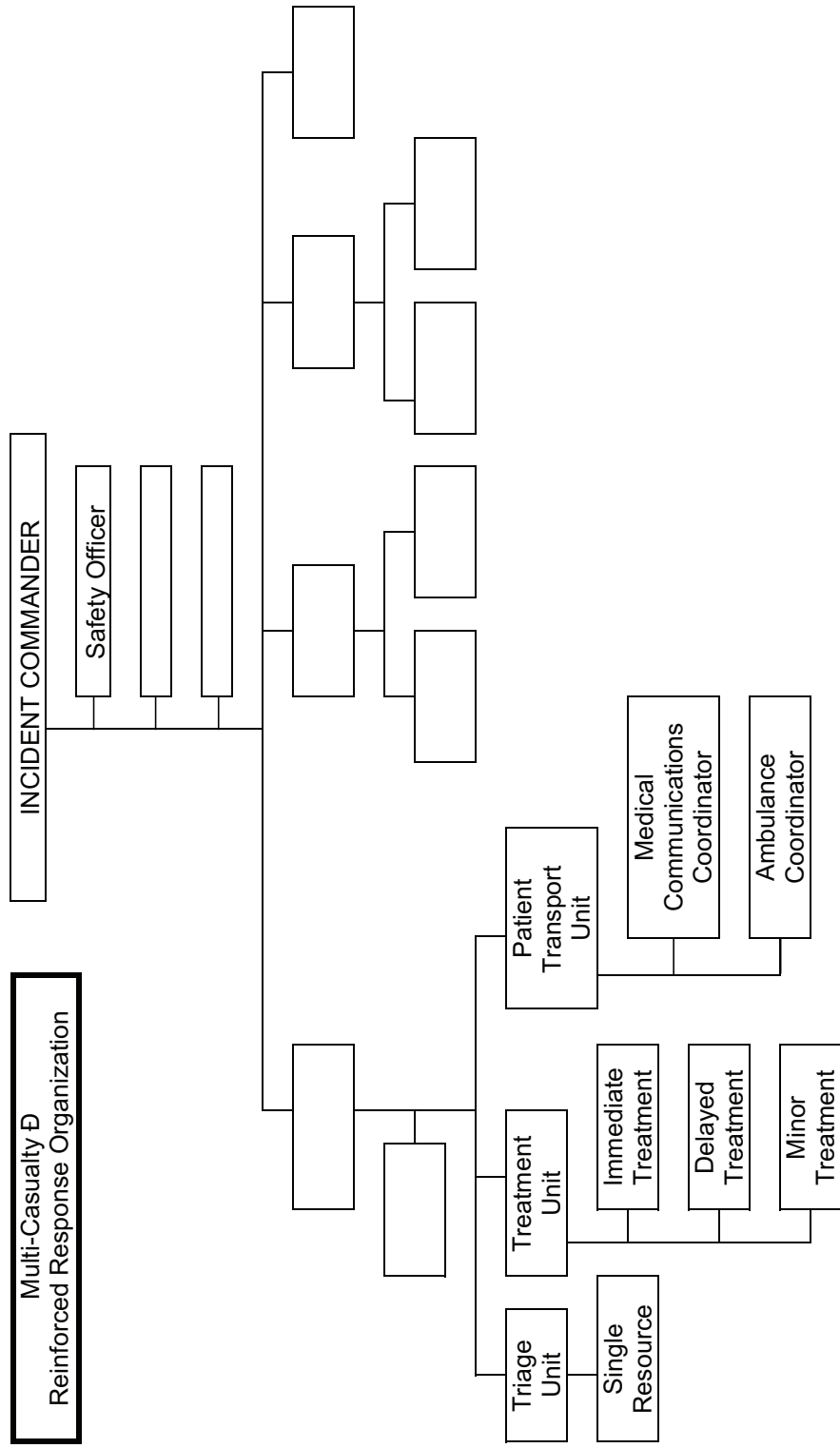
Reinforced Response Organization: In addition to the initial response, the Incident Commander establishes a Safety Officer, Triage Unit Leader, a Treatment Unit Leader, Patient Transport Unit Leader and Ambulance Coordinator. Also, patient treatment areas are established and staffed.

Multi-Group Response: All positions within the Medical Group are now filled. The Air Operations Branch is shown to illustrate the coordination between the Ambulance Coordinator and the Air Operations Branch. Extrication Group is established to free entrapped victims.

Multi-Branch Incident Organization: The complete incident organization shows the Multi-Casualty Branch and other Branches. The Multi-Casualty Branch now has multiple Medical Groups (geographically separate) but only one Patient Transportation Group. This is because all patient transportation must be coordinated through one point to avoid overloading hospitals or other medical facilities.

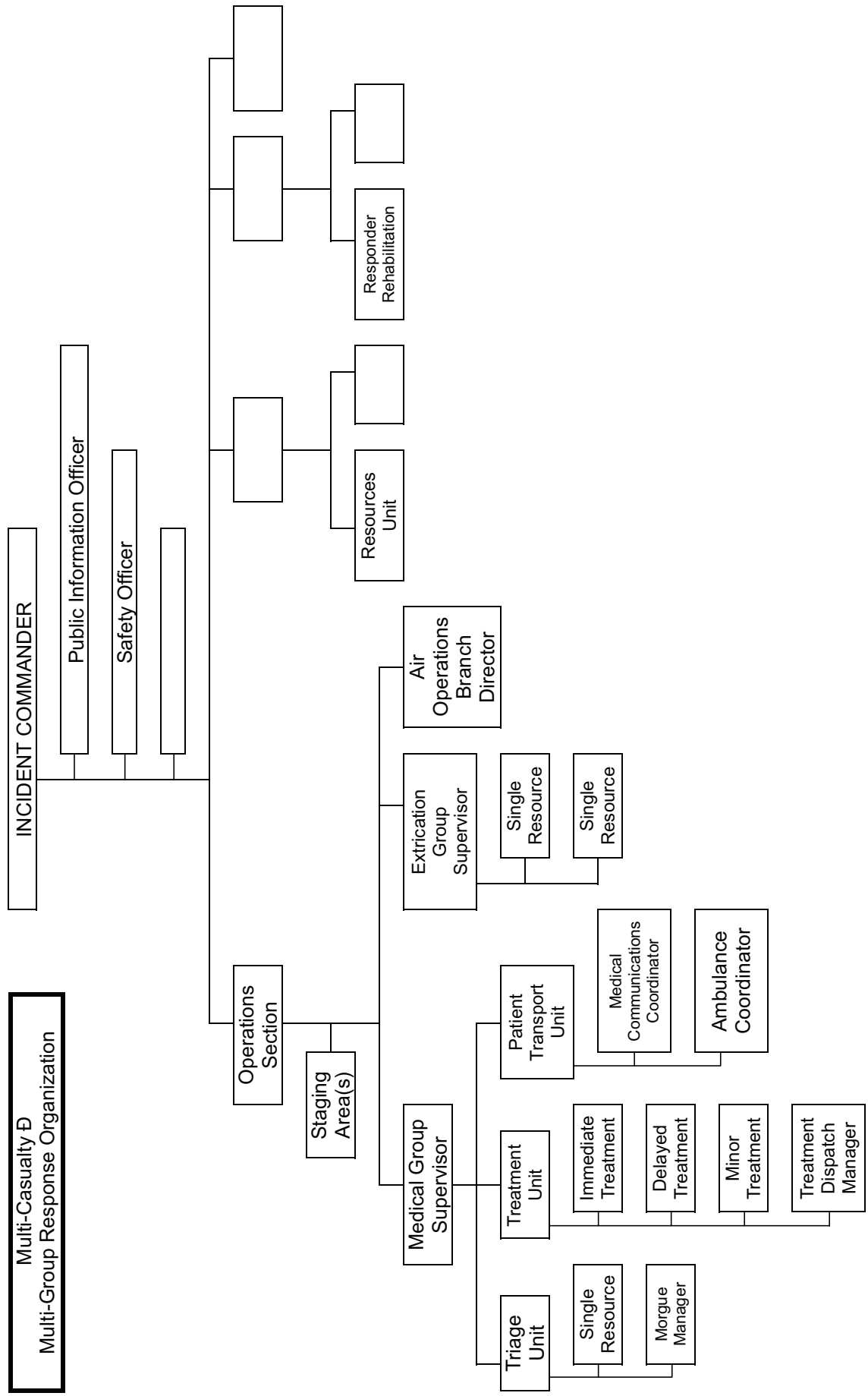


Multi-Casualty Initial Response Organization (example): This example depicts the arrival of an Engine Company and ALS Ambulance. These units find conditions warranting a Multi-Casualty response. The Company Officer assumes Incident Command and engine personnel begin the Simple Triage and Rapid Treatment (START) process by triaging victims and, at the same time, assess any additional hazards (fuel spills, unstable vehicles, etc.). A Paramedic from the ambulance becomes Medical Communications Coordinator (Med. Comm.) while the second member (PM or EMT) begins establishing Treatment Areas beginning with the Immediate Treatment Area.



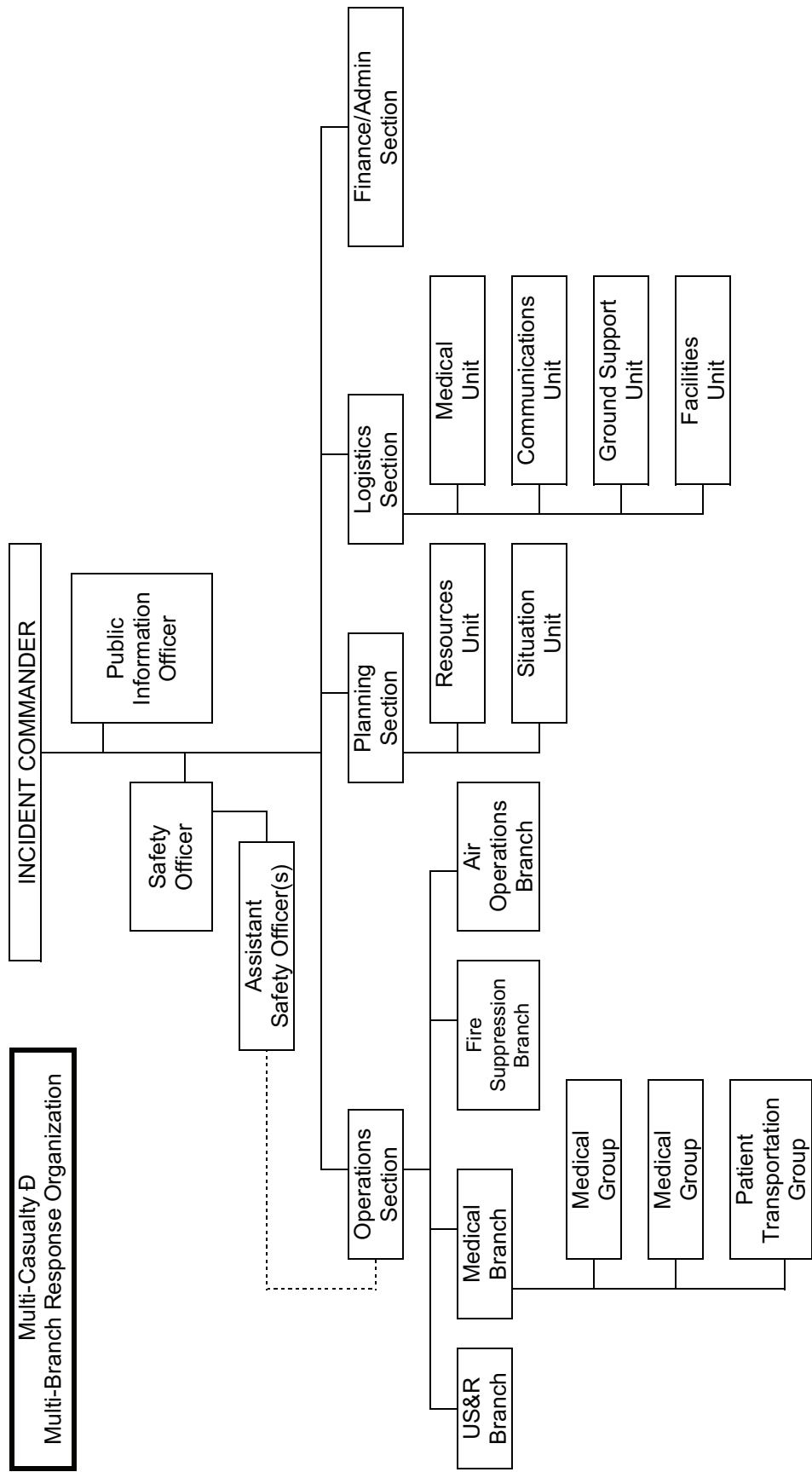
Multi-Casualty Reinforced Response Organization (example): With the arrival of additional engine companies, an additional ambulance and an Ambulance Supervisor, the Incident Command has established Unit Leaders, reinforced the Treatment Areas, established a Patient Transport Unit and activated an Ambulance Coordinator. A Safety Officer is assigned early in the incident.

Multi-Casualty & Multi-Group Response Organization



Multi-Casualty Multi-Group Response Organization (example): The Medical Group Supervisor is managing the treatment and transportation of the injured. In most cases triage would be winding down and those personnel can be assigned to a treatment area. An Air Operations Branch Director is assigned to work with the Patient Transport Unit in coordinating air transportation of patients to distant facilities. The Operations Section Chief has now turned attention to those victims who may be entangled or entombed by establishing an Extrication Group. Other elements of the Command Staff are activated as well as selected elements of the Planning and Logistics Sections.

**Multi-Casualty Δ
Multi-Branch Response Organization**



Multi-Casualty Δ Multi-Branch Response Organization (example): Multiple Medical Groups are working an especially widespread incident. The Patient Transportation Unit has been upgraded to a Group to more effectively handle the multiple transport needs. Other Branches (US&R and Fire Suppression) are activated. Selected Sections and Units of the General Staff are activated. Assistant Safety Officers are assigned within the Operations Section, US&R, and Fire Suppression.