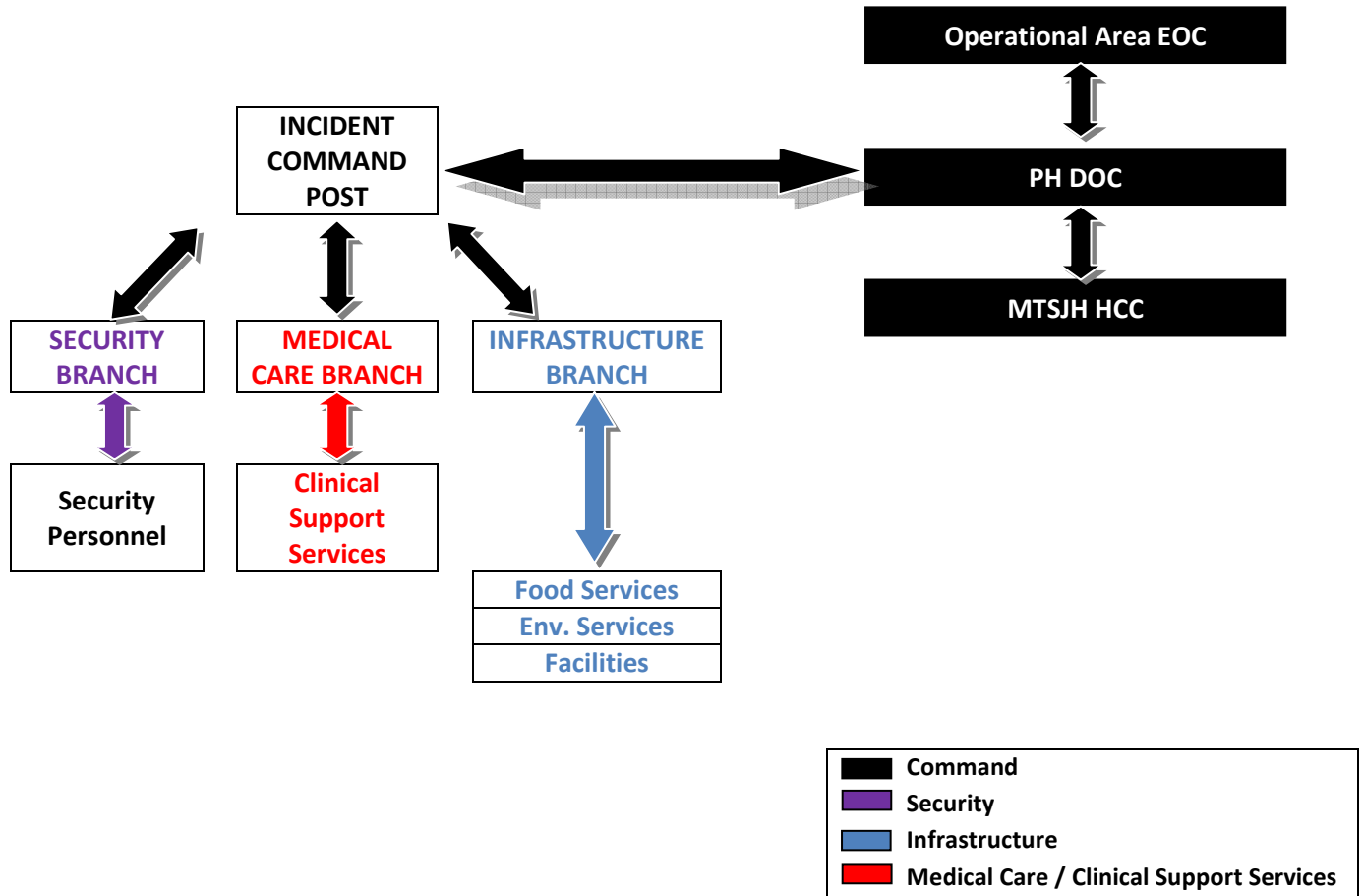


Alternate Care Site Communications



COMMAND-NET

The Incident Command Post will likely have both a ground-line telephone capable of receiving communications from on-site personnel, as well as a designated radio frequency (Command-Net). Branch Directors (Security, Medical Care, Infrastructure) will also be assigned radios for contacting the ICP on the Command-Net. For External Communications, the ICP will likely use ground-line communications (telephone, fax) for communicating and coordinating with the Public Health DOC.

SECURITY-NET

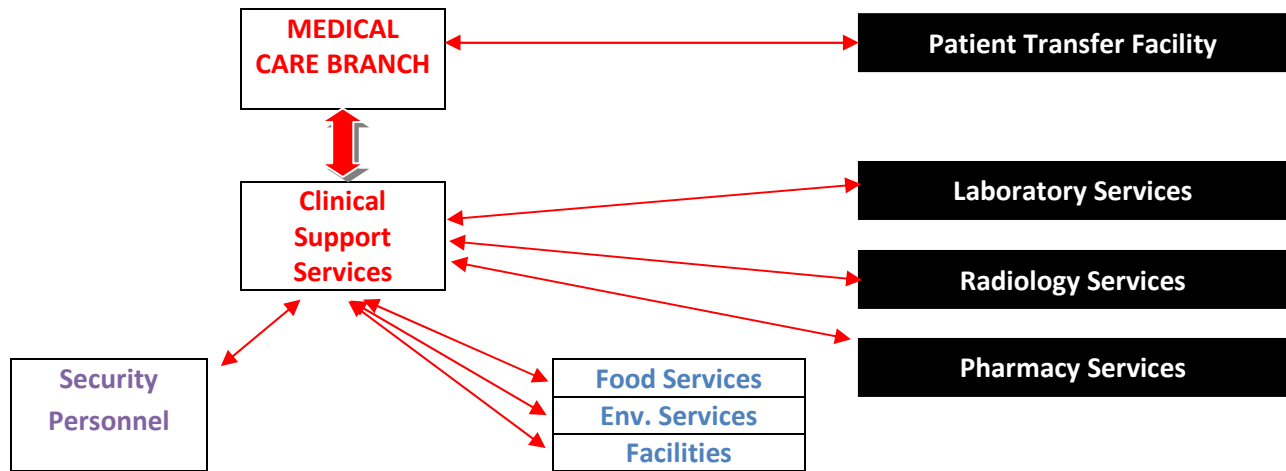
The security personnel working at the ACS may be assigned either professional two-way radios or short range radios (e.g. family radio) for tactical operations, as well as for contacting the ICP on the Command-Net frequency.

INFRASTRUCTURE-NET

The Infrastructure Branch personnel (Facilities Unit, Food Services Unit, Environmental Services Unit) may be assigned short range radios for on-site tactical communications, as well as for coordination with the Medical Care Branch when necessary.

MEDICAL CARE BRANCH:

The Medical Care Branch personnel will need radio capabilities for contacting the ICP (Command-Net), Security (Security-Net), and Infrastructure Personnel (Infrastructure-Net). The Medical Care Branch will also need the capability for receiving patient transfer information, and for interacting with various off-site clinical support services such as Laboratory, Radiology, and Pharmacy.



NOTE: If telephone and fax capabilities cannot be established directly within the Medical Care Branch, a Communications Unit may be established in one of the adjacent buildings to support the Medical Care Branch operations.

